

Supine Breast Solutions

Access
Supine™



positioning
patients for life.®

www.Qfix.com

Access™ Supine Breast Devices

The Access™ Supine positions the patient's chest and thorax for external beam radiotherapy. The ladder system secures the backrest at various angles while the tailbone pad and bottom stopper comfortably support the patient for the duration of imaging and treatment.

- The back rest lays flat, indexing at zero degrees, for lung treatments.
- Accessories fix securely to the device so that they remain in place for storage and workflow efficiency
- Ladder System indexes patients at 0°, 5°, 7.5°, 10°, 12.5°, and 15° angles. Optional 20° and 25° Ladder Set sold separately.



Access™ Supine Breast & Lung

RT-4546

(with Carbon Fiber Grid)

The carbon fiber Access Supine Breast & Lung Device is designed to comfortably position patients for breast and lung treatments and features a carbon fiber grid to minimize attenuation.

RT-4546-02

(without Grid)

Also available without grid for enhanced imaging.



Access™ Supine Breast Only Device

RT-4546-01

The cost-effective Access Supine Breast Device is designed with an X-Trans™ base for treating breast only.

Access™ Supine MR Breast & Lung

RT-4546MRI

Access Supine MR Breast & Lung Treatment Device is CT compatible and MR safe for enhanced imaging as well as treatment - all in one lightweight device. This device was designed for ease of use and to maximize patient comfort. See page 69 for more details on ArmShuttle Elite.



Arm Shuttle™ Elite

The Arm Shuttle™ Elite allows for full arms up positioning technique. The ribs of the shuttle index vacuum cushions and aid in ease of setup for daily treatments.



ArmShuttle™
Elite **RT-4546C**



NEW

Portrait™ Head & Neck Thermoplastic Adapters

Portrait Head and Neck thermoplastic adapters allow head and neck treatment for patients that are unable to lay flat. Portrait Head Only Adapter is supplied with mounting provisions for a chin strap.



Portrait™ Head Only Adapter **RT-4546-03**



Portrait™ Head & Shoulder Adapter **RT-4546-04**



NEW

Thermoplastic Chin Strap

Aquaplast RT Thermoplastic Chin Strap is designed to be used with the Portrait Head Only Adapter for Supine Breast Devices to keep the head out of the treatment field.



RT-1778PR2DC
Aquaplast RT Chin Strap

NEW

Thermoplastic Breast Adapter

This device increases functionality by providing the ability to attach thermoplastic sheets to the Access Supine. This increases reproducibility of breast for positioning treatment. The device works in conjunction with 14" Opti-Handles to secure thermoplastics to the Access Supine.



Opti-Handles are used to secure Aquaplast RT to the Access Supine Thermoplastic Breast Adapter.

RT-4546-05	Access Supine Thermoplastic Breast Adapter
RT-4454-14	Opti-Handles, 36 cm (14 in.)
RT-1783P3	Aquaplast Standard Perf (30cm x 60 cm x 2.4 mm)

NEW

Access™ Arm & Wrist Supports

Adjustable Arm & Wrist Supports position the patient's arms out of the treatment field while exposing the chest for breast and nodal imaging and treatment. The ability to customize each patient's arm and wrist position also helps to increase comfort for patients with incisions while minimizing skin folds.



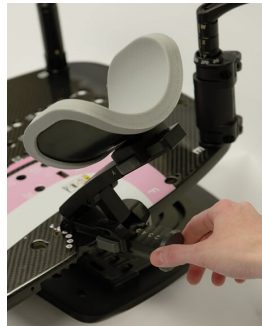
Refer to IFU for conditions for use.



RT-4546AW-01
Wrist Cup



RT-4546AA-01
Arm Support



Turn knob allows quick and ridged indexing of the Arm Support.



Wrist Supports rotate and are height adjustable.



Pads are easily removed for cleaning.

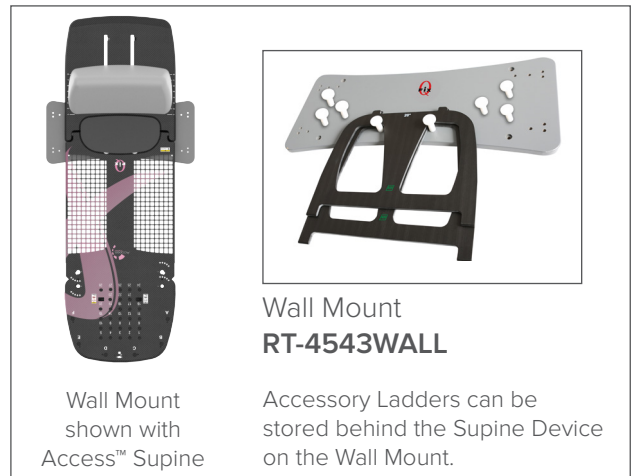
Accessory Ladder Set



Accessory Ladder Set
RT-4546L



Accessory Ladder Set elevates the backrest to 20° & 25° angles for increased imaging and treatment options.

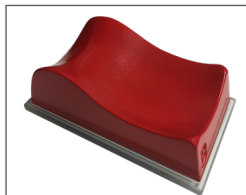


Wall Mount
RT-4543WALL

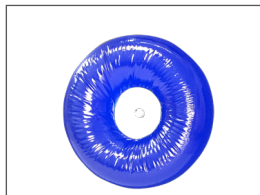
Wall Mount shown with Access™ Supine

Accessory Ladders can be stored behind the Supine Device on the Wall Mount.

Headrests



RT-4490-BX
TIMO B Headrest
on Indexing Tray



RT-4494 (200mm)
RT-4494-P (150mm)
Gel Donut Headrest

Sliding Locating Bar



Sliding Locating Bar
RT-4551BAR-01

The Sliding Locating Bar offsets the Access™ Supine Device for flexible imaging and treatment setups.



Qfix
Avondale, PA
+1 610.268.0585
sales@Qfix.com
www.Qfix.com

This brochure contains information about products which may or may not be available in particular countries. Each country has specific laws and regulations governing the commercialization of medical devices and the communication of information regarding medical devices in printed and digital media. Products appearing in this brochure or on our website may or may not have received approval, clearance, or marketing authorization by a governmental regulatory body in any particular country, or may have received approval, clearance, or marketing authorization for different indications and restrictions in different countries, or may be for investigational use only. A product's appearance in this brochure should not be construed as a solicitation or promotion for said product, nor any indication which is not authorized by the laws and regulations of the country where the reader resides.